

# Goldsmiths Research Online

*Goldsmiths Research Online (GRO)  
is the institutional research repository for  
Goldsmiths, University of London*

## Citation

Chard, James; Edey, Rosanna; Yon, Daniel; Murphy, Jennifer; Bird, Geoffrey and Press, Clare. 2019. Atypical emotion recognition from bodies is associated with perceptual difficulties in healthy aging. *Journal of Experimental Psychology: Human Perception and Performance*, 45(6), pp. 803-811. ISSN 0096-1523 [Article]

## Persistent URL

<https://research.gold.ac.uk/id/eprint/27401/>

## Versions

The version presented here may differ from the published, performed or presented work. Please go to the persistent GRO record above for more information.

If you believe that any material held in the repository infringes copyright law, please contact the Repository Team at Goldsmiths, University of London via the following email address: [gro@gold.ac.uk](mailto:gro@gold.ac.uk).

The item will be removed from the repository while any claim is being investigated. For more information, please contact the GRO team: [gro@gold.ac.uk](mailto:gro@gold.ac.uk)

Accepted in Journal of Experimental Psychology: Human Perception and Performance, 19<sup>th</sup>

January, 2018

**Atypical emotion recognition from bodies is associated with perceptual  
difficulties in healthy aging**

James Chard <sup>1</sup>, Rosanna Edey <sup>1</sup>, Daniel Yon <sup>1</sup>, Jennifer Murphy <sup>2</sup>, Geoffrey Bird <sup>3</sup> and Clare

Press <sup>1</sup>

<sup>1</sup> Department of Psychological Sciences, Birkbeck, University of London

<sup>2</sup> MRC Social, Genetic and Developmental Psychiatry Centre, Institute of Psychiatry,  
Psychology and Neuroscience, King's College London

<sup>3</sup> Department of Experimental Psychology, University of Oxford

Corresponding author: [c.press@bbk.ac.uk](mailto:c.press@bbk.ac.uk)

Department of Psychological Sciences, Birkbeck, University of London, Malet Street, London,  
United Kingdom WC1E 7HX

Word count = 5500

## **Abstract**

A range of processes are required for recognizing others' affective states. It is particularly important that we process the perceptual cues providing information about these states. These experiments tested the hypothesis that difficulties with affective state identification in older adults (OAs) arise, at least partly, from deficits in perceptual processing. To this end we presented 'point light display' whole body stimuli to healthy OAs and comparison younger adults (YAs) in three signal detection experiments. We examined the ability of OAs to recognize visual bodily information – posture and kinematics – and whether impaired recognition of affective states can be explained by deficits in processing these cues. OAs exhibited reduced sensitivity to postural cues (Experiment 1) but not to kinematic cues (Experiment 2) in affectively-neutral stimuli. Importantly, they also exhibited reduced sensitivity only to affective states conveyed predominantly through posture (Experiment 3) – i.e., the cue they were impaired in perceiving. These findings highlight how affective state identification difficulties in OAs may arise from problems in perceptual processing, and demonstrate more widely how it is essential to consider the contribution of perceptual processes to emotion recognition.

**Keywords:** Emotion recognition; vision; body perception; healthy aging

### **Public significance statement**

This study demonstrates that perceptual impairments in healthy aging contribute to difficulties recognizing others' emotional state from the way that they move. For instance, if older adults cannot perceive accurately that another's limbs are relaxed, they cannot use this information to determine that they are feeling happy rather than tense. These findings highlight how it is essential to consider the contribution of perceptual processes when theorizing about emotion recognition, both in healthy aging and other populations.

## 1. Introduction

A range of processes are required for recognizing the affective states of others (Happé, Cook & Bird, 2017), many of which are directly involved in identifying that a certain hidden ‘internal’ state (e.g., anger) was the driving force behind another individual’s observed behavior. However, it is also particularly important that we process the perceptual cues providing information about these states. A variety of cues provide this information, including the lexical content and intonation of our speech, our facial expressions and our body language – both our posture and the kinematics of our movements. For example, perception of relaxed limbs can signal happiness, while perception of fast, jerky movements can signal anger (Wallbott, 1998; Montepare et al., 1999; Dael et al., 2012). If we are insensitive to a certain perceptual cue (e.g., relaxed limbs in another) we will be unable to use this information to determine another’s internal state, and to use this state attribution for effective social understanding and communication.

Older adults (OAs) exhibit impairments in recognizing affective states from facial expressions (Calder et al., 2003; MacPherson et al., 2006; Keightly et al., 2006; Kessels et al., 2014) and whole-body movements (Montepare et al., 1999; Ruffman et al., 2009; Spencer et al., 2016), which are thought to result in a cascade of problems in social understanding and communication and hence exacerbate social difficulties associated with isolation (Happé et al., 1998; Shankar et al., 2011; Luo et al., 2012). These difficulties with emotion recognition are hypothesized (e.g., Sullivan & Ruffman, 2004; Ruffman et al., 2008) to arise from neurophysiological changes in the ‘social brain’ – involving regions such as the orbitofrontal cortex, cingulate cortex and amygdala – i.e., the network implicated in the ‘accurate perception of the dispositions and intentions of other individuals’ (p. 367; Brothers, 2002). It

appears to follow from this account (e.g., Ruffman et al., 2008) that problems with social cognition are caused directly by problems in post-perceptual mechanisms for computing internal states.

However, at least some of the age-related deficits in emotion recognition may result not from post-perceptual processes but from changes in perceptual processing. Alongside anatomical changes that influence perceptual processing – such as a decline in the senescent optics of the eye (Elliott et al., 2009), thinning of retinal nerve fiber (Parikh et al., 2007) and cortical changes in visual regions (Brewer & Barton, 2014) – aging is associated also with more cognitive perceptual changes such as difficulties with ‘configural’ sensory processing, requiring integration across ‘local-level’ features. For instance, OAs exhibit smaller ‘global precedence’ effects, such that the speed advantage typically observed in recognizing the global form of objects in comparison with local features is reduced in OAs (e.g., Oken et al., 1999; Slavin et al., 2002; Lux et al., 2008; Insch et al., 2012).

The present experiments examined the ability of OAs to recognize visual information that is critical for emotion recognition from body movements – specifically posture and kinematics – and whether impaired recognition of affective states can be explained, at least partly, by deficits in processing these cues. We used a signal detection paradigm, allowing dissociation of signal sensitivity from response biases (Kingdom & Prins, 2010), in contrast with previous studies of emotion recognition in OAs which have typically used accuracy measures. All experiments presented point light displays (PLDs) where major joints of the human body are represented by a point of light against a uniform background (Johansson, 1973). These displays are widely used in the study of body perception because they allow presentation of kinematic and postural information while removing other cues such as facial expressions.

Experiment 1 required participants to detect a postural feature of the stimuli, and Experiment 2 a kinematic feature. Experiment 3 required detection of affective states, presenting affective states that have been found to rely differentially on postural and kinematic information. We predicted that OAs would predominantly exhibit deficits in detecting those affective states conveyed through cues they were impaired in perceiving, which would suggest that impairments in perceptual processes may account, at least partly, for atypicalities in emotion recognition.

## **2. Experiment 1**

Experiment 1 required participants to detect a postural feature of the PLD walker. They were asked to report whether one arm (e.g., right) of the walker was flexed at a more acute angle at the elbow than the other (e.g., left). To do so, participants needed to assess the position of the dot representing the wrist on one side of the body relative to those representing other body parts – particularly the elbow and shoulder on the same side, and the equivalent body parts on the other side of the body. We presented ‘Postural Difference’ trials, where the described difference was present and ‘No Postural Difference’ trials where it was not (i.e., both elbows were equally flexed). Although the PLDs were in motion in Experiment 1, the manipulation did not affect other aspects of implied movement so, for example, walking speed was the same for Postural Difference and No Postural Difference trials.

Across all experiments, sensitivity to probed stimuli was calculated as  $d'$ , which indicates the extent to which participants are more likely to report the presence of a probed stimulus when it is present than when it is absent, i.e., the difference between the z-scores of the hit rate (HR; proportion of Postural Difference trials correctly identified) and false alarm rate (FAR;

proportion of No Postural Difference trials wrongly identified as Postural Difference trials;  $d' = \theta^{-1}(HR) - \theta^{-1}(FAR)$ ; p. 153; Kingdom & Prins, 2010). We report results in relation to sensitivity below (response bias findings are presented in Supplementary Materials).

## **2.1 Methods**

### **2.1.1 Participants**

Two groups participated in Experiment 1, 30 YAs aged 35 or under ( $M = 27.5$ ,  $SD = 4.7$ , 21 females) and 27 OAs aged 60 or older ( $M = 73.5$ ,  $SD = 7.5$ , 17 females). One OA was excluded from analysis due to a large negative  $d'$ , making the participant a statistical outlier and indicating confusion over task demands. The sample size was determined in all experiments reported in this manuscript such that we would have at least 80% power to detect a medium-sized group x condition interaction effect ( $\eta_p^2 = 0.06$ ,  $\alpha = 0.05$ ), in line with previous studies of emotion recognition (Ruffman et al., 2008; the number of participants undertaking all three experiments was also past this threshold). This requirement led to the calculation that we would require at least 24 in each group to detect effects. Note that in all experiments we report more than 24 in each group because we tested all who responded to our recruitment drive within a specified time-frame.

In Experiment 1, as in all experiments reported in this paper, participants had normal or corrected-to-normal vision according to self-report. The experiments were carried out in accordance with the ethical standards laid down in the 1964 Declaration of Helsinki and approved by the Birkbeck, University of London Ethics Committee.

We obtained Weschler Abbreviated Scale of Intelligence (WASI) scores for two subtests (matrix reasoning and vocabulary) for 26 OAs and 28 YAs in Experiment 1. Raw OA scores ( $M$



= 70.5, SD = 7.1; FSIQ2 equivalent = 128.3) did not differ significantly from raw YA scores (M = 71.9, SD = 5.4, FSIQ2 equivalent = 122.7<sup>1</sup>):  $t(52) = 0.84, p = 0.41$ .

### 2.1.2 Stimuli

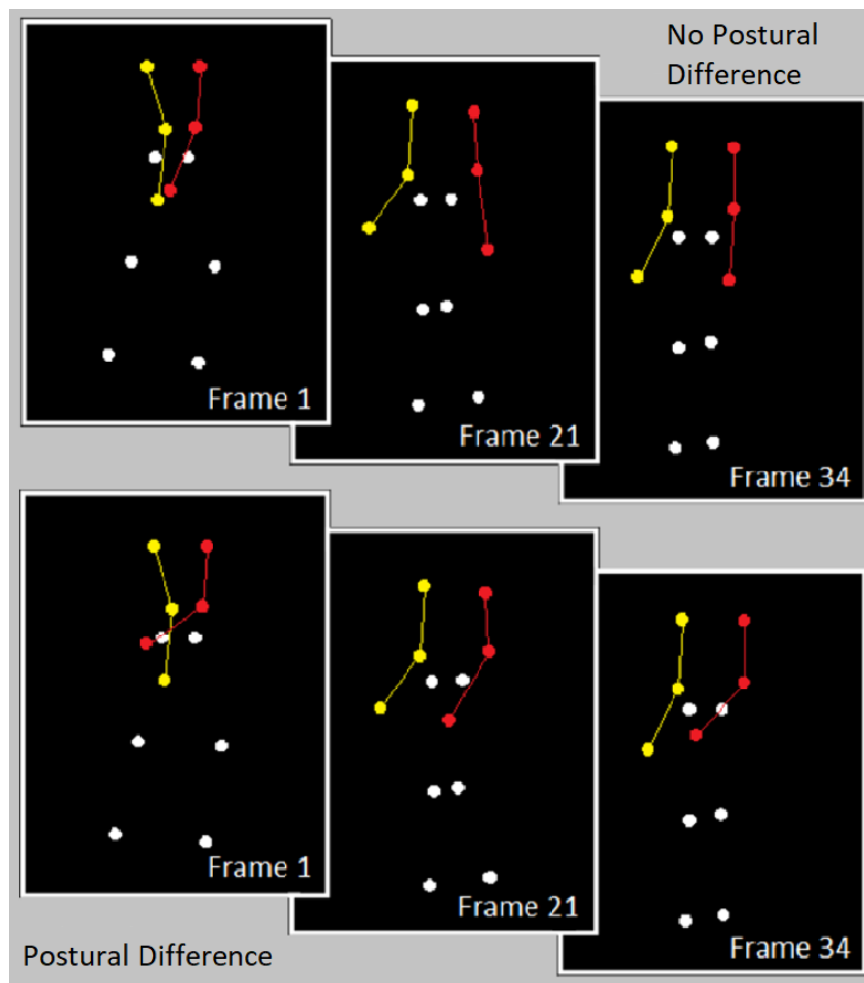
In Experiment 1, and in other experiments reported in this paper, stimuli were PLD videos adapted from those developed by Nakaerts et al. (2012; see also Edey et al., 2017). Experiment 1 used PLD videos of two actors (one male, one female) in affectively-neutral states shown from two different viewpoints (coronal [0°] or intermediate to coronal and sagittal [45°]) and played at a rate of 40 frames per second (mean velocity = 3.91 pixels/frame [SD = 1.69]; mean acceleration = 1.30 pixels/frame<sup>2</sup> [SD = .21]). All videos in Experiment 1 were two second clips and, in No Postural Difference trials, the angle of flexion at the elbow was equivalent for right and left arms.

Postural Difference trials adapted the videos such that the average angle of flexion at the elbow of one arm was greater than the other arm. For each frame of each video, the angle was calculated between the elbow and wrist, and elbow and shoulder. Coordinates for a revised wrist position were then established based on rotating its position relative to the elbow by a proportion of the original angle. This manipulation maintained the appearance of a natural arm swing in that the precise angles of flexion at both elbows varied systematically across the video, but generated a more acute angle between the points representing the wrist, elbow, and shoulder in one arm than the other. Fig. 1 illustrates the difference between Postural Difference and No Postural Difference trials by giving three equivalent example frames from Experiment 1 (see also Supplementary Videos). Two versions of each Postural

---

<sup>1</sup> Raw scores provide a more appropriate comparison in the present context of comparing between age groups because FSIQ2 scores are normalized by age group, marginally increasing the score for the older participants.

Difference video were produced, differing in the extent of arm flexion and therefore signal strength. Small signal videos reduced the apparent angle between the shoulder, elbow and wrist by 10%, and large signal videos by 15%, over the course of the video.



**Fig. 1 – Example frames from videos used in Experiment 1 (frames 1, 21, and 34) in the No Postural Difference (top) and Postural Difference (bottom) conditions. Color and lines are used to highlight the arm position at equivalent frames; in the Postural Difference stimulus the red arm on the right of the image is flexed at a more acute angle than the yellow arm on average across the video. In the actual videos, all PLDs were white on black, without connecting lines. The question presented in this example was, ‘Was the arm on the right of the screen more bent?’**

This combination of two actors, two viewing angles, left and right arm flexion versions, and large and small postural signals, generated 16 Postural Difference videos. There were four No Postural Difference videos, corresponding to the two actors and two viewing angles.

### **2.1.3 Procedure**

In Experiment 1, and all other experiments reported in this paper, participants were seated in a dimly lit room at an approximate distance of 40 cm from a 24 inch LCD computer monitor (resolution = 1920 x 1200 pixels; refresh rate = 60 Hz). The experiments were conducted in MATLAB® using the Cogent graphics toolbox.

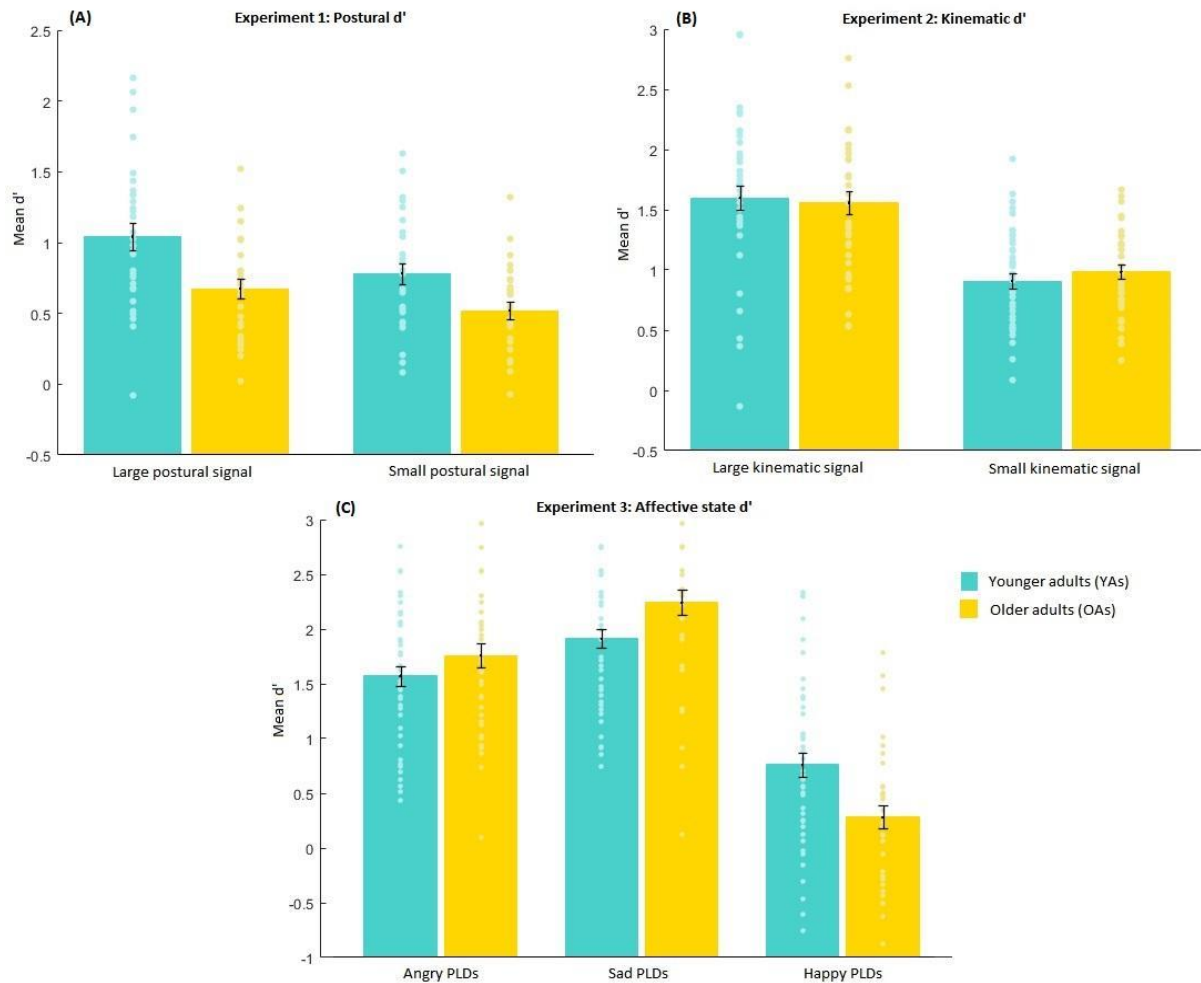
On each trial, participants were shown a PLD video and then asked either ‘Was the arm on the right of the screen more bent?’ or, ‘Was the arm on the left of the screen more bent?’. Participants did not know which of the two questions they would be asked during the stimulus presentation. Participants responded ‘yes’ or ‘no’ using left and right keys, respectively. Participants were shown their answer, and prompted to change their response or press a key to continue. Participants saw no videos containing a signal other than the probed target signal, e.g., where the arm on the right was flexed to a greater extent but the left arm was probed.

Trials were presented to each participant in two blocks of 56. Within each block, each Postural Difference video was presented twice, and each No Postural Difference video was presented six times, resulting in 32 Postural Difference trials and 24 No Postural Difference trials (see Supplementary Materials for a discussion of methodological decisions with respect to trial numbers). Presentation order was fully randomized within each block.

## 2.2 Results and discussion

One sample t-tests confirmed that  $d'$  was significantly positive for both YAs ( $M = 0.87$ ,  $SD = 0.45$ ;  $t(29) = 10.58$ ,  $p < 0.001$ ) and OAs ( $M = 0.62$ ,  $SD = 0.32$ ;  $t(26) = 10.07$ ,  $p < 0.001$ ) indicating that both groups were able to distinguish Postural Difference from No Postural Difference trials. We conducted a mixed ANOVA on the  $d'$  data with size of the postural signal (large or small based on the extent of implied arm flexion) as a within-participants factor, and age group as a between-participants factor (see Supplementary Materials for tables of descriptive and inferential data; the findings in all three experiments did not interact with the block or the question asked so analyses are reported collapsed across these factors). Unsurprisingly, there was a main effect of size of the postural signal, confirming that the signal was harder to detect when the extent of implied arm flexion was lower ( $F(1,55) = 44.10$ ,  $p < 0.001$ ,  $\eta_p^2 = 0.45$ ). Importantly, there was also a main effect of age group, with YAs more sensitive to differences in posture than OAs ( $F(1,55) = 6.30$ ,  $p = 0.01$ ,  $\eta_p^2 = 0.10$ ; see Fig. 2A). There was no interaction between the size of postural signal and age group ( $F(1,55) = 1.86$ ,  $p = 0.18$ ).

These findings therefore demonstrated that OAs were less sensitive than YAs to postural body features.



**Fig. 2 – Mean sensitivity ( $d'$ ) in YAs and OAs in the three experiments. Error bars represent  $\pm 1$  SE of the mean and individual points represent performance for each participant. (A) Experiment 1. Sensitivity to postural signal. (B) Experiment 2. Sensitivity to kinematic signal. (C) Experiment 3. Sensitivity to anger, sadness and happiness.**

### 3. Experiment 2

The findings from Experiment 1 demonstrate that OAs exhibited lower sensitivity to postural body features. Reduced performance in Experiment 1 is unlikely to be due to a decline in intellectual capabilities (Salthouse, 2005; Salthouse, 2012) – WASI scores were matched between OAs and YAs and the OA impairment was numerically smaller in the more

demanding version of the experimental task (see Fig. 2). However, as already noted, OAs exhibit reduced functioning in several aspects of visual processing and it is important to ascertain the specificity of the effect, especially given that the visual acuity was assessed simply according to self-report. We therefore designed Experiment 2 such that task demands were broadly similar to Experiment 1, but participants were required to detect whether the velocity of the walker in the PLD increased or decreased across the time-course of the video. Participants thereby identified a kinematic feature of the stimuli, rather than a postural feature.

### **3.1 Methods**

#### **3.1.1 Participants**

Two groups participated in Experiment 2, 39 YAs aged 35 or under ( $M = 27.5$ ,  $SD = 4.7$  years, 26 females) and 39 OAs aged 60 or older ( $M = 70.7$ ,  $SD = 6.9$  years, 26 females).

We obtained WASI scores for 27 OAs and 28 YAs in Experiment 2. Raw OA scores ( $M = 70.4$ ,  $SD = 6.9$ ; FSIQ2 equivalent = 128.0) did not differ significantly from raw YA scores ( $M = 71.5$ ,  $SD = 4.9$ , FSIQ2 equivalent = 122.3;  $t(53) = 0.67$ ,  $p = 0.50$ ).

#### **3.1.2 Stimuli**

No Kinematic Difference trials presented unadapted videos identical to those presented as No Postural Difference trials in Experiment 1. In Kinematic Difference trials the same PLD videos were manipulated so that the velocity of the PLD figure either steadily increased or decreased during the second half of the video, while leaving posture unchanged. To generate the appearance of a gradual change in velocity, the coordinates of each point in each frame in the second half were recalculated according to a power function such that they appeared

increasingly ahead of (or behind) the original while remaining on the same trajectory (see Supplementary Videos; also note that it has been suggested that acceleration cannot be directly detected over short time periods [Brouwer et al., 2002] and therefore participants may in fact use velocity information as the basis for discriminations, but our hypotheses do not rest on which of these features are used by participants). The velocity change function was in the form  $w = x + y^a(z)$  where  $x$  is the original position of a point in frame number  $y$ ,  $z$  the change in position between frames  $y$  and  $y+1$ , and  $a$ , the power constant. Altering 'a' makes the change more or less extreme. Two versions of each Kinematic Difference video were produced, differing in the size of kinematic signal based on degree of change in velocity. Small signal videos presented implied velocities at the end of the video that differed from the first half by 30%, and large signal videos by 50%, with the rate of change in velocity constant across the second half. The combination of two actors, two viewing angles, videos where velocity increased and decreased, and large and small kinematic signals, generated 16 Kinematic Difference videos. As in Experiment 1, all videos were of two second duration.

### **3.1.3 Procedure**

The procedure matched Experiment 1, except that participants were asked either 'Was the person speeding up?' or, 'Was the person slowing down?'. As in Experiment 1, trials were presented to each participant in two blocks of 56 and presentation order was randomized within each block.

### **3.2 Results and discussion**

One sample t-tests confirmed that sensitivity ( $d'$ ) was significantly positive for both YAs ( $M = 1.20$ ,  $SD = 0.46$ ;  $t(38) = 16.14$ ,  $p < 0.001$ ) and OAs ( $M = 1.22$ ,  $SD = 0.42$ ;  $t(38) = 18.21$ ,  $p <$

0.001), indicating that both groups were able to distinguish Kinematic Difference from No Kinematic Difference trials. We conducted a mixed ANOVA on  $d'$  with size of kinematic signal (large or small based on extent of implied change in velocity) as a within-participants factor, and age group as a between-participants factor (see Supplementary Materials for tables of descriptive and inferential data). Unsurprisingly, there was a main effect of size of kinematic signal, confirming that participants were more sensitive to the signal when there was greater velocity change ( $F(1,76) = 274.27, p < 0.001, \eta_p^2 = 0.78$ ). Importantly, there was no significant main effect of age group, with OAs and YAs exhibiting equivalent sensitivity towards changes in velocity ( $F(1,76) = 0.03, p = 0.87$ ; see Fig. 2B). The interaction between age group and size of kinematic signal was also not significant ( $F(1,76) = 2.39, p = 0.13$ ).

To assess whether the non-significant difference between OA and YA sensitivity towards changes in velocity reflected the absence of an effect rather than a lack of statistical power, we calculated a Bayes Factor ( $BF_{01}$ ), representing the ratio of evidence for the null model over evidence for the alternative model.  $BF_{01} > 3$  has been assumed to provide good evidence to support the null (Jeffreys, 1939; Lee & Wagenmakers, 2014). Conducting a Bayesian independent samples t-test in JASP (Love et al., 2015) revealed evidence for the null hypothesis over the alternative that OAs and YAs have differential sensitivity to changes in velocity ( $BF_{01} = 4.18$ ). Experiment 2 therefore demonstrates equivalent performance between OAs and YAs with similar stimuli and task requirements to Experiment 1, but in a task that required detection of a kinematic rather than postural cue.



#### 4. Experiment 3

Based on the findings in Experiments 1 and 2, we hypothesized that OAs would exhibit impairments in detecting affective states conveyed primarily through postural information but would be relatively preserved in detecting those conveyed primarily through kinematics. In other words, they would exhibit impairments when detecting affective states conveyed through the cues that they have relative difficulty perceiving. This hypothesis was examined in Experiment 3 where we studied the ability of OAs to recognize happy, angry and sad affective states from PLDs.

Previous studies have indicated that the identification of some affective states relies more heavily on kinematic cues such as velocity and acceleration whereas others can be identified more easily from postural information. The specific pattern of these dependencies will likely differ depending upon the stimulus set – and certainly also between bodily and facial cues – but previous work in YAs has revealed much about the sources of information observers use to make affective state judgments in the present stimulus set. Edey et al. (2017) found that velocity cues were of greater importance when detecting anger (rapid, jerky movement) and sadness (slow, sluggish movement) than when detecting happiness in these stimuli, given that judgments were influenced to a greater extent by removal of the cues (see also Barliya et al., 2013; and note that variation in acceleration tracked the variation in velocity). Additionally, when the kinematic cues were removed from these stimuli leaving only postural cues, participants detected happiness more readily than anger or sadness (happiness relative to sadness [ $t(86) = 2.8, p = 0.006$ ] and anger [ $t(86) = 3.6, p = 0.001$ ]), suggesting that happiness detection in these stimuli relied more upon postural features than anger or sadness detection. We therefore predicted based on Experiments 1 and 2 that OAs would exhibit impaired

detection of happiness due to deficient posture processing, and relatively intact detection of anger and sadness, due to intact kinematic processing.

## **4.1 Methods**

### **4.1.1 Participants**

Two groups participated in Experiment 3, 46 YAs aged 35 or under ( $M = 27.7$ ,  $SD = 4.8$  years, 32 females) and 37 OAs aged 60 or older ( $M = 71.8$ ,  $SD = 7.2$  years, 23 females). The results of three OAs were excluded because  $d$ 's could not be calculated due to 100% false alarm rates or 0% hit rates in at least one condition<sup>2</sup>.

We obtained WASI scores for 25 OAs and 30 YAs in Experiment 3. Raw OA scores ( $M = 70.8$ ,  $SD = 6.9$ ; FSIQ2 equivalent = 129.0) did not differ significantly from raw YA scores ( $M = 71.1$ ,  $SD = 6.8$ , FSIQ2 equivalent = 121.5;  $t(53) = 0.18$ ,  $p = 0.86$ ).

To ensure groups were matched for other traits that may be associated with deficits in emotion recognition, we also obtained scores on the Toronto Alexithymia Scale (TAS-20) and the Beck Depression Inventory (BDI) for 25 OAs and 18 YAs. Scores did not differ according to age group in relation to the TAS-20 (OA  $M = 45.20$ ,  $SD = 8.80$ ; YA  $M = 45.39$ ,  $SD = 7.19$ ;  $t(41) = 0.08$ ,  $p = 0.94$ ) or BDI (OA  $M = 7.80$ ,  $SD = 5.09$ ; YA  $M = 8.72$ ,  $SD = 6.44$ ;  $t(41) = 0.52$ ,  $p = 0.60$ ).

### **4.1.2 Stimuli**

Affectively Neutral trials presented the same four PLDs used in Experiments 1 and 2. Affective State trials presented other stimuli from the same original set (Nackaerts et al., 2012) but where the actors conveyed happiness, sadness, or anger. The sad PLD moved with low

---

<sup>2</sup> Of those excluded, all three had 100% false alarm rates in the happy condition, and one of these also had 0% hit rates in sad and angry conditions (i.e. classified PLDs as happy at every opportunity, and never classified PLDs as sad or angry).

velocity and acceleration, taking fewer steps per second than the affectively-neutral walker (sad: mean velocity = 2.03 pixels/frame [SD = .73], mean acceleration = .73 pixels/frame<sup>2</sup> [SD = .09]; neutral: mean velocity = 3.91 pixels/frame [SD = 1.69], mean acceleration = 1.30 pixels/frame<sup>2</sup> [SD = .21]). In contrast, the happy (mean velocity = 5.91 pixels/frame [SD = 2.54]; mean acceleration = 1.99 pixels/frame<sup>2</sup> [SD = .40]) and angry walkers (mean velocity = 6.97 [SD = 2.87]; mean acceleration = 2.49 pixels/frame<sup>2</sup> [SD = .37]) both moved with higher velocity and acceleration, but where the difference relative to affectively neutral walkers was especially exaggerated in the angry PLD (see Supplementary Videos). Half of the videos were trimmed to equalize step cycle (two cycles) and half to equalize duration (two seconds).

This combination of two actors, two viewing angles, and equalization by duration and step cycle, generated eight Affective State videos per affective state, while there were four Affectively Neutral videos.

#### **4.1.3 Procedure**

The procedure matched Experiments 1 and 2, except that participants were asked to consider which affective state, if any, was conveyed in the PLD. They were told that this state could be angry, sad, happy, or none of these. After each video, participants were asked either ‘Was the person happy?’, ‘Was the person sad?’ or ‘Was the person angry?’. Giving participants a two alternative forced choice task departed from typical emotion recognition studies in the literature because we aimed to isolate sensitivity from response biases, and such a design is recommended for orthogonalisation (see Yeshurun et al., 2008).

Trials were presented to each participant in two blocks of 84 PLD videos (16 Affective State and 12 Affectively Neutral trials per affective state) and presentation order was randomized within each block, so participants were not aware when watching a video which affective

state would be probed. Like in Experiments 1 and 2 participants saw no videos containing a signal other than the target signal, for example trials in which the person was happy and they were asked whether they were angry.

## 4.2 Results and discussion

One sample t-tests confirmed that  $d'$  was significantly positive for both YAs and OAs for all three affective states tested, indicating that both groups were able to distinguish Affective State from Affectively Neutral trials (all  $t_s > 2.66$ , all  $p_s < 0.007$ ). We carried out a mixed ANOVA on the  $d'$  data, with target affective state (happy, sad, or angry) as the within-participants factor and age group as the between-participants factor (see Supplementary Materials for tables of descriptive and inferential data). Greenhouse-Geisser corrections were applied where appropriate. There was a significant main effect of affective state ( $F(2,162) = 138.06$ ,  $p < 0.001$ ,  $\eta_p^2 = 0.63$ ), with participants across age groups being most sensitive in the sad condition and least sensitive in the happy condition. Importantly, this main effect was qualified by a significant interaction between affective state and age group ( $F(2,162) = 9.62$ ,  $p = 0.001$ ,  $\eta_p^2 = 0.11$ ). Follow-up tests indicated that OAs were significantly less sensitive to happiness than the YAs ( $t(81) = 3.05$ ,  $p = 0.003$ ), equally sensitive to anger ( $t(81) = -1.18$ ,  $p = 0.24$ ) and, interestingly, more sensitive to sadness ( $t(81) = -2.20$ ,  $p = 0.03$ ; see Fig. 2C).

Although, at a group level,  $d'$ s were significantly positive for both groups in all three conditions, the happy condition was most difficult for both groups and some participants had negative  $d'$  (in addition to the exclusions noted above, 7 YAs and 12 OAs fell into this category). Since all participants with negative  $d'$  in the happy condition had significantly positive  $d'$  in the sad and angry conditions, it is unlikely that these arose from confusion over the task instructions. However, it is possible that, while some of those with negative  $d'$  were

insensitive to informative visual cues, others may have been sensitive to the cues but categorized neutral PLDs as happy and vice versa. However, even excluding all 19 participants with negative  $d$ 's (all in the happy condition), there remained a significant interaction between age group and target affective state ( $F(2,124) = 4.62, p = 0.02, \eta_p^2 = 0.07$ ), and follow-up tests indicated OAs remained significantly less sensitive to happy PLDs than YAs ( $t(62) = 2.31, p = 0.02$ ).

To summarize, OAs were impaired in detecting those affective states thought to be conveyed predominantly through the cues they were shown to be impaired in perceiving in Experiments 1 and 2 (posture; i.e., happiness) but not in detecting those conveyed primarily through the cues they were shown to process similarly to YAs (kinematics; i.e., sadness and anger).

## **5. Cross-experiment comparisons**

By design, most of our participants completed all three experiments. This subset included 29 YAs ( $M = 27.3, SD = 4.7$  years, 21 females) and 24 OAs ( $M = 74.8, SD = 6.8$  years, 14 females). Among this subset, the patterns of significance (both main effects and interactions) were the same as with the full samples, and there was a task (i.e., Experiment) by age group interaction (see Supplementary Materials). Additionally, data from these participants enabled us to carry out partial correlations to verify the assumptions underlying Experiment 3. These correlation analyses verified that within our dataset, happiness perception relied more heavily upon postural than kinematic cues, and anger and sadness perception more heavily upon kinematic cues. However, we note that these comparisons are relative rather than absolute given that our study was not optimally powered for detecting such correlational effects and therefore

null effects should be treated with caution. The details of these analyses are provided in the Supplementary Materials.

## **6. General discussion**

The present experiments tested the hypothesis that perceptual disturbances may contribute to OAs' deficits in emotion recognition, using 'point light display' body movement stimuli. The data demonstrated difficulty processing postural cues in OAs relative to YAs (Experiment 1), alongside intact processing of kinematic cues (Experiment 2). In support of our hypothesis, the OAs also exhibited difficulty recognizing only the affective state (happiness) conveyed predominantly through the cue towards which Experiment 1 had demonstrated them to be impaired in processing (posture; Experiment 3).

These findings are therefore consistent with the hypothesis that difficulties in recognizing affective states in OAs relate to reduced sensitivity to the perceptual cues signaling those states. In fact, not only were the emotion recognition deficits larger for those emotions predominantly conveyed by perceptual cues they were impaired in processing, they were absent for emotions predominantly conveyed by intact perceptual cues. This pattern may appear inconsistent with the popular hypothesis that deterioration in the 'social brain' – involving the orbitofrontal cortex, cingulate cortex and amygdala – is responsible for broad deficits in emotion recognition in OAs (e.g., Ruffman et al., 2008). Given that this is the network implicated in the 'accurate perception of the dispositions and intentions of other individuals' (p. 367; Brothers, 2002), it appears to follow from a strong version of the 'social brain' account that problems with emotion recognition are caused directly by problems in

post-perceptual mechanisms for computing internal states. Under this interpretation, this specific pattern of impairments in Experiment 3 would not have been predicted. However, given that the account is somewhat underspecified at the cognitive level, it is also possible that one could use the present findings to flesh out the account and suggest that the ‘social brain’ deteriorates due to reduced perceptual input across age.

One could speculate that the deficit OAs show in postural processing is related to difficulties with visual configural processing. For instance, OAs exhibit smaller ‘global precedence’ effects, such that the speed advantage typically observed in recognizing the global form of objects in comparison with local features is reduced in OAs (Oken et al., 1999; Slavin et al., 2002; Lux et al., 2008; Insch et al., 2012; see also Murray et al., 2010; Slessor et al., 2012; Spencer et al., 2016). Postural information requires computing the relative position of effectors – in the case of Experiment 1, the position of the dot representing the wrist on one side of the body relative to those representing other body parts – and therefore deficits processing configural information would yield posture perception difficulties. Although perception of kinematic features may often require configural processing, the task presented in Experiment 2 likely did not. Specifically, participants could perform the required judgment by focusing on any single point on an arm or leg. Therefore, under this hypothesis, the present findings would indicate that deficits in perceiving posture will typically be found in OAs because the nature of this cue is typically configural, but problems in perceiving kinematics may depend upon whether the kinematic feature required configural processing (see Di Domenico et al., 2015; Grainger et al., 2017). Possible reasons for age-related changes in configural processing include narrowing of the attentional field based on retinal deterioration (Kosslyn et al., 1998) and changes in patterns of hemispheric asymmetry (Dolcos et al., 2002).

Future research should further examine the functional and neural basis of the sensory deficit generating this pattern across postural and kinematic cues. It could also consider how far effects generalize to more naturalistic environments than those provided by sparse PLDs (although it is of note that previous studies have indicated OAs do not have difficulties in interpreting PLDs *per se*, including those conveying emotional information – see Ruffman et al., 2009).

Our findings highlight a methodological issue in relation to previous literature suggesting relatively emotion-general deficits in recognition from facial, vocal and bodily cues (e.g., Ruffman et al., 2008; Insch et al., 2012; Spencer et al., 2016; note that the previous literature has typically found intact recognition of disgust). This literature has not allowed for a specific assessment of sensitivity to the signal, with the majority of studies requiring participants to label the affective state presented, from multiple response options, and calculating the percentage accuracy. These procedures allow it to be inferred that individuals have difficulties in correctly labeling emotions, but cannot determine whether these difficulties reflect poor signal sensitivity or response biases (see Isaacowitz et al., 2007, for a discussion of this issue). For instance, several studies have indicated intact performance for happiness recognition and, given a possible ‘positivity bias’ in OAs (Carstensen & Mikels, 2005), it is particularly important to dissociate sensitivity from bias effects in this context. However, future work must examine whether OA deficits in sensitivity to affective states are *only* determined by impaired perception of cues towards those states, or whether there are other contributing factors.

More broadly, these findings highlight how difficulties in perceptual processing can generate problems in emotion recognition. Although the requirement for perceptual processing in



emotion recognition is widely acknowledged, its specific contribution to patterns in processing is often neglected, with studies considering only broad visual acuity via self-report both in aging studies and those examining other populations. For instance, difficulties in emotion recognition in autism may not stem from lower empathy, as has classically been assumed (Baron-Cohen, 2009), but rather perceptual atypicalities (Brewer et al., 2016; see also Cracco et al., 2016; Hayes et al., 2015). In line with the present findings, it has also recently been found that individuals with developmental prosopagnosia – a deficit hypothesized by some to result from atypical configural perceptual processing (Avidan et al., 2011) – also have emotion recognition difficulties (Biotti & Cook, 2016).

In conclusion, the present findings suggest that difficulties in recognizing affective states from bodily cues in OAs may be related to difficulties in perceiving the perceptual cues signaling those states. These findings demonstrate more widely how it is essential to consider the contribution of perceptual processes to emotion recognition.

## **7. Acknowledgments**

CP was funded by Leverhulme Trust (RPG-2016-105) and Wellcome Trust (204770/Z/16/Z; which also funded RE) grants and GB by a project grant from the Baily Thomas Charitable Fund. DY and JM were supported by doctoral studentships from the Economic and Social Research Council [1599941; ES/J500057/1].

## References

- Avidan, G., Tanzer, M., & Behrmann, M. (2011). Impaired holistic processing in congenital prosopagnosia. *Neuropsychologia*, *49*(9), 2541-2552.
- Barliya, A., Omlor, L., Giese, M. A., Berthoz, A., & Flash, T. (2013). Expression of emotion in the kinematics of locomotion. *Experimental Brain Research*, *225*(2), 159-176.
- Baron-Cohen, S. (2009). Autism: the empathizing–systemizing (E-S) theory. *Annals of the New York Academy of Sciences*, *1156*(1), 68-80.
- Biotti, F., & Cook, R. (2016). Impaired perception of facial emotion in developmental prosopagnosia. *Cortex*, *81*, 126-136.
- Brewer, A. A., & Barton, B. (2014). Visual cortex in aging and Alzheimer's disease: changes in visual field maps and population receptive fields. *Frontiers in Psychology*, *5*, 74.
- Brewer, R., Biotti, F., Catmur, C., Press, C., Happe, F., Cook, R., & Bird, G. (2016). Can neurotypical individuals read autistic facial expressions? Atypical production of emotional facial expressions in autism spectrum disorders. *Autism Research*, *9*, 262-271.
- Brothers, L. (2002). The social brain: A project for integrating primate behavior and neurophysiology in a new domain. In *Foundations in Social Neuroscience*, ed. JT Cacioppo, GG Berntson, R Adolphs, CS Carter, RJ Davidson, MK McClintock, BS McEwen, MJ Meaney, DL Schacter, EM Sternberg, SS Suomi, SE Taylor, pp. 367-385. Cambridge, MA: MIT Press.
- Brouwer, A. M., Brenner, E., & Smeets, J. B. (2002). Perception of acceleration with short presentation times: Can acceleration be used in interception? *Perception & Psychophysics*, *64*(7), 1160-1168.
- Calder, A. J., Keane, J., Manly, T., Sprengelmeyer, R., Scott, S., Nimmo-Smith, I., & Young, A. W. (2003). Facial expression recognition across the adult life span. *Neuropsychologia*, *41*(2), 195-202.
- Carstensen, L. L., & Mikels, J. A. (2005). At the intersection of emotion and cognition aging and the positivity effect. *Current Directions in Psychological Science*, *14*(3), 117-121.

- Cracco, E., De Coster, L., Andres, M., & Brass, M. (2015). Motor simulation beyond the dyad: Automatic imitation of multiple actors. *Journal of Experimental Psychology: Human Perception and Performance*, *41*, 1488-1501.
- Dael, N., Mortillaro, M., & Scherer, K. R. (2012). Emotion expression in body action and posture. *Emotion*, *12*(5), 1085-1101.
- Di Domenico, A., Palumbo, R., Mammarella, N., & Fairfield, B. (2015). Aging and emotional expressions: is there a positivity bias during dynamic emotion recognition? *Frontiers in Psychology*, *6*, 1130.
- Dolcos, F., Rice, H. J., & Cabeza, R. (2002). Hemispheric asymmetry and aging: right hemisphere decline or asymmetry reduction. *Neuroscience & Biobehavioral Reviews*, *26*(7), 819-825.
- Edey, R., Yon, D., Cook, J., Dumontheil, I., & Press, C. (2017). Our own action kinematics predict the perceived affective states of others. *Journal of Experimental Psychology: Human Perception and Performance*, *43*(7), 1263-1268.
- Elliott, S. L., Choi, S. S., Doble, N., Hardy, J. L., Evans, J. W., & Werner, J. S. (2009). Role of high-order aberrations in senescent changes in spatial vision. *Journal of Vision*, *9*(2), 1-16.
- Grainger, S.A., Henry, J.D., Phillips, L.H., Vanman, E.J., Allen, R. (2017). Age deficits in facial affect recognition: The influence of dynamic cues. *The Journals of Gerontology Series B*, *72*, 622-632.
- Happé, F. G., Cook, J.L., & Bird, G. (2017). The structure of social cognition: In(ter)dependence of sociocognitive processes. *Annual Review of Psychology*, *68*, 243-267.
- Happé, F. G., Winner, E., & Brownell, H. (1998). The getting of wisdom: Theory of mind in old age. *Developmental Psychology*, *34*(2), 358-362.
- Hayes, S.J., Andrew, M., Elliott, D., Gowen, E., & Bennett, S.J. (2016). Low fidelity imitation of atypical biological kinematics in autism spectrum disorders is modulated by self-generated selective attention. *Journal of Autism and Developmental Disorders*, *46*, 502-513.

- Insch, P. M., Bull, R., Phillips, L. H., Allen, R., & Slessor, G. (2012). Adult aging, processing style, and the perception of biological motion. *Experimental Aging Research, 38*(2), 169-185.
- Isaacowitz, D.M., et al. (2007). Age differences in recognition of emotion in lexical stimuli and facial expressions. *Psychology and Aging, 22*(1), 147-159.
- Jeffreys, H. (1939). *Theory of probability*. Oxford, UK: The Clarendon Press.
- Johansson, G. (1973). Visual perception of biological motion and a model for its analysis. *Perception & Psychophysics, 14*(2), 201-211.
- Kessels, R. P., Montagne, B., Hendriks, A. W., Perrett, D. I., & Haan, E. H. (2014). Assessment of perception of morphed facial expressions using the Emotion Recognition Task: Normative data from healthy participants aged 8–75. *Journal of Neuropsychology, 8*(1), 75-93.
- Keightley, M. L., Winocur, G., Burianova, H., Hongwanishkul, D., & Grady, C. L. (2006). Age effects on social cognition: faces tell a different story. *Psychology and Aging, 21*(3), 558-572.
- Kingdom, F. A. A., & Prins, N. (2010). *Psychophysics: a practical introduction*. London, UK: Elsevier.
- Kosslyn, S. M., Brown, H. D., & Dror, I. E. (1999). Aging and the scope of visual attention. *Gerontology, 45*(2), 102-109.
- Lee, M. D., & Wagenmakers, E.-J. (2014). *Bayesian cognitive modeling: A practical course*. Cambridge, UK: Cambridge University Press.
- Love, J., Selker, R., Marsman, M., Jamil, T., Verhagen, A. J., Ly, A., et al. (2015). JASP (Version 0.7.1.12) [Computer software]
- Luo, Y., Hawkley, L. C., Waite, L. J., & Cacioppo, J. T. (2012). Loneliness, health, and mortality in old age: A national longitudinal study. *Social Science & Medicine, 74*(6), 907-914.
- Lux, S., Marshall, J. C., Thimm, M., & Fink, G. R. (2008). Differential processing of hierarchical visual stimuli in young and older healthy adults: Implications for pathology. *Cortex, 44*(1), 21-28.

MacPherson, S. E., Phillips, L. H., & Delia Sala, S. (2006). Age-related differences in the ability to perceive sad facial expressions. *Aging Clinical and Experimental Research*, *18*(5), 418-424.

Montepare, J., Koff, E., Zaitchik, D., & Albert, M. (1999). The use of body movements and gestures as cues to emotions in younger and older adults. *Journal of Nonverbal Behavior*, *23*(2), 133-152.

Murray, J. E., Halberstadt, J., & Ruffman, T. (2010). The face of aging: Sensitivity to facial feature relations changes with age. *Psychology and Aging*, *25*(4), 846-850.

Nackaerts, E., Wagemans, J., Helsen, W., Swinnen, S. P., Wenderoth, N., & Alaerts, K. (2012). Recognizing biological motion and emotions from point-light displays in autism spectrum disorders. *PLoS One*, *7*(9), e44473.

Navon, D. (1977). Forest before trees: The precedence of global features in visual perception. *Cognitive Psychology*, *9*(3), 353-383.

Oken, B. S., Kishiyama, S. S., Kaye, J. A., & Jones, D. E. (1999). Age-related differences in global-local processing: stability of laterality differences but disproportionate impairment in global processing. *Journal of Geriatric Psychiatry and Neurology*, *12*(2), 76-81.

Parikh, R. S., Parikh, S. R., Sekhar, G. C., Prabakaran, S., Babu, J. G., & Thomas, R. (2007). Normal age-related decay of retinal nerve fiber layer thickness. *Ophthalmology*, *114*(5), 921-926.

Press, C. (2011). Action observation and robotic agents: Learning and anthropomorphism. *Neuroscience and Biobehavioral Reviews*, *35*, 1410-1418.

Ruffman, T., Henry, J. D., Livingstone, V., & Phillips, L. H. (2008). A meta-analytic review of emotion recognition and aging: Implications for neuropsychological models of aging. *Neuroscience & Biobehavioral Reviews*, *32*(4), 863-881.

Ruffman, T., Sullivan, S., & Dittrich, W. (2009). Older adults' recognition of bodily and auditory expressions of emotion. *Psychology and Aging*, *24*(3), 614-622.

Salthouse, T. A. (2005). Relations between cognitive abilities and measures of executive functioning. *Neuropsychology*, *19*(4), 532-545.

Salthouse, T. (2012). Consequences of age-related cognitive declines. *Annual Review of Psychology*, *63*, 201-226.

Shankar, A., McMunn, A., Banks, J., & Steptoe, A. (2011). Loneliness, social isolation, and behavioral and biological health indicators in older adults. *Health Psychology*, *30*(4), 377-385.

Slavin, M. J., Mattingley, J. B., Bradshaw, J. L., & Storey, E. (2002). Local–global processing in Alzheimer’s disease: an examination of interference, inhibition and priming. *Neuropsychologia*, *40*(8), 1173-1186.

Slessor, G., Riby, D. M., & Finnerty, A. N. (2012). Age-related differences in processing face configuration: The importance of the eye region. *Journals of Gerontology Series B: Psychological Sciences and Social Sciences*, *68*(2), 228-231.

Spencer, J. M., Sekuler, A. B., Bennett, P. J., Giese, M. A., & Pilz, K. S. (2016). Effects of aging on identifying emotions conveyed by point-light walkers. *Psychology and Aging*, *31*(1), 126-138.

Sullivan, S., & Ruffman, T. (2004). Emotion recognition deficits in the elderly. *International Journal of Neuroscience*, *114*, 403-432.

Wallbott, H. G. (1998). Bodily expression of emotion. *European Journal of Social Psychology*, *28*(6), 879-896.

Yeshurun, Y., Carrasco, M., & Maloney, L.T. (2008). Bias and sensitive in two-interval forced choice procedures: Tests of the difference model. *Vision Research*, *48*, 1837-1851.

# Atypical emotion recognition from bodies is associated with perceptual difficulties in healthy aging: Supplementary Materials

James Chard, Rosanna Edey, Daniel Yon, Jennifer Murphy, Geoffrey Bird and Clare Press

## Bias ( $c$ ) results for Experiments 1-3

Our hypotheses all pertained to sensitivity, where it is important to dissociate possible influences of response bias ( $c$ , the extent to which participants report the presence of the probed stimulus regardless of its objective presence, i.e., the inverse of the mean of the z-scores of HR and FAR;  $C = -0.5(\theta^{-1}(HR) + \theta^{-1}(FAR))$ ). It should be noted that since there were unequal numbers of trials where the target difference was present and where it was absent, caution is needed in interpreting absolute values for  $c$  (Wyart et al., 2012; Terman & Terman, 1972; note that, in contrast, unequal ratios are not generally deemed a problem when interpreting  $d'$  measures; see Swets et al., 1961; Sherman et al., 2015). That is,  $c$  would be negative rather than zero for a rational observer because there were more trials where it was correct to answer in the affirmative. The same ratio (4:3) was used in the three experiments, however, meaning the extent to which a bias would be rational was the same across all three.

In Experiments 1 and 2,  $c$  did not differ (Experiment 1:  $t(52) = 1.60$ ,  $p = 0.12$ ; Experiment 2:  $t(76) = 0.18$ ,  $p = 0.86$ ) between OAs (Experiment 1:  $M = 0.02$ ,  $SD = 0.52$ ; Experiment 2:  $M = 0.46$ ,  $SD = 0.55$ ) and YAs (Experiment 1:  $M = 0.22$ ,  $SD = 0.41$ ; Experiment 2:  $M = 0.48$ ,  $SD = 0.54$ ) In Experiment 3, a mixed ANOVA on the  $c$  data, with target affective state (happy, sad, or angry) as the within-participants factor and age group as the between-participants factor,

indicated a significant main effect of affective state ( $F(2,162) = 23.69, p < 0.001, \eta_p^2 = 0.23$ ). One-sample t-tests confirmed that participants had a tendency towards answering 'yes' to the question 'Was the person happy?' (overall  $M = -0.586$ ; OA  $M = -0.80, SD = 0.82$ ; YA  $M = -0.40, SD = 0.86$ ;  $t(82) = -6.06, p < 0.001$ ), while there was a trend in the opposite direction in the angry condition (overall  $M = 0.18$ ; OA  $M = 0.02, SD = 0.97$ ; YA  $M = 0.30, SD = 0.73$ ; ;  $t(82) = 1.88, p = 0.06$ ), and there was no sign of a bias in the sad condition (overall  $M = -0.04$ ; OA  $M = -0.06, SD = 0.81$ ; YA  $M = -0.02, SD = 0.80$ ;  $t(82) = -0.42, p = 0.67$ ). There was also a trend for OAs to be more likely than YAs to respond in the affirmative across all three target affective states ( $F(1,81) = 3.57, p = 0.062$ ), but no interaction between affective state and age group ( $F(2, 162) = 1.29, p = 0.27$ ). This trend of OAs to answer 'yes' to any question may be deemed consistent with previous suggestions of positivity biases in OAs (van Reekum et al., 2010), depending upon exactly how such an account was characterized, and demonstrates the importance of dissociating sensitivity from biases.

### **Interactions with number of testing sessions and blocks**

Some of the participants who undertook more than one experiment (i.e., the majority) undertook them in separate sessions (12 OAs and 23 YAs) while others undertook them all in the same session (12 OAs and 6 YAs). Regardless of whether experiments were undertaken separately or together, participants always undertook Experiment 3 first, followed by Experiment 2 and finally Experiment 1. This order was chosen because it was deemed that undertaking Experiment 1 or 2 (asking directly about posture or kinematic cues) before 3 (emotion recognition) could direct participants towards which cues were of likely relevance for detecting affective states and hence alter judgments. Similarly, it was deemed that undertaking a task which required computing cues configurally (Experiment 1) could



subsequently encourage participants to compute other cues configurally even when unnecessary (Experiment 2; see General discussion). To examine whether greater fatigue effects in OAs may have contributed to the observed deficits in Experiment 1, we carried out an ANOVA with age group and number of sessions as between-participants factors. There was no main effect of number of sessions on  $d'$  in Experiment 1 ( $F(1, 49) = 0.08, p = 0.78$ ) and nor, more importantly, was there an interaction between number of sessions and age group ( $F(1,49) = 0.006, p = 0.94$ ).

In all experiments, trials were divided into two blocks, with the same trials appearing in a random order within each block. In no experiment was there an interaction between block and age group (Experiment 1 –  $F(1,49) = 0.08, p = 0.78$ ; Experiment 2 –  $F(1,76) = 0.74, p = 0.39$ ; Experiment 3 –  $F(1,81) < 0.01, p = 0.96$ ). For participants who undertook all three experiments there was also no three-way interaction between experiment, block, and age group:  $F(2,51) = 0.80, p = 0.45$ . These analyses therefore demonstrated no evidence that effects change throughout the course of each experiment.

### **Cross-experiment comparisons**

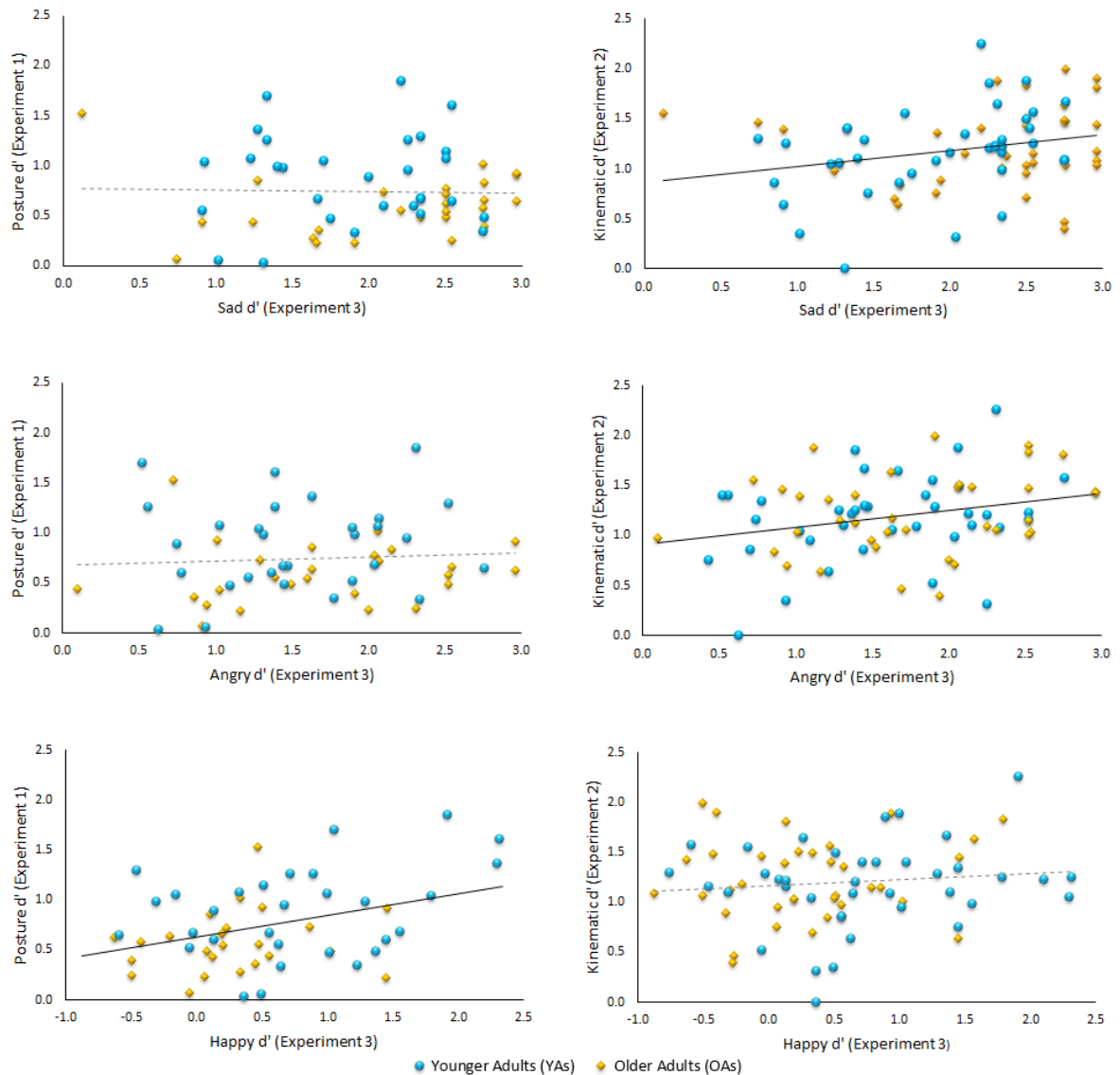
Providing further evidence that the cue type (posture versus kinematics) drives a difference in age-related impairments, a mixed ANOVA including only participants who had taken part in Experiments 1 and 2, and with Experiment (1 or 2) as a within-participants factor, demonstrated an interaction between Experiment and age group on  $d'$  values ( $F(1,54) = 5.05, p = 0.03, \eta_p^2 = 0.09$ ).

The results in Experiment 3 were consistent with our hypothesis, based upon Experiments 1 and 2, that OAs would exhibit reduced sensitivity to affective states conveyed predominantly

through postural cues, and be relatively preserved in detecting those conveyed primarily through kinematics. Our hypotheses rested upon assumptions from our previous study (Edey et al., 2017) that recognizing happiness relies upon postural cues in this stimulus set more than kinematic cues, and anger and sadness detection rely more upon kinematic cues. However, our hypothesis can also be verified with the present dataset by asking how individual differences in the experiments relate to each other, and therefore disregarding the need for these assumptions. Specifically, individual differences in the posture task should predict individual differences in detecting affective states dependent upon postural cues, whereas individual differences in the kinematics task should predict those in detecting states dependent upon the kinematic cues (importantly, when controlling for age group to ensure that these analyses are not circular with respect to any reported group effects).

To this end, we carried out partial correlations between performance in each of Experiments 1 and 2 and detection of the three separate affective states in Experiment 3, controlling for age group. Kinematic  $d'$  was significantly related to  $d'$ s for both angry PLDs ( $r=0.31, p = 0.02, 95\% \text{ CI } [0.05, 0.53]$ ; see Fig. 3) and sad PLDs ( $r = 0.31, p = 0.03, 95\% \text{ CI } [0.05, 0.53]$ ), but not happy PLDs ( $r= 0.06, p = 0.68, 95\% \text{ CI } [-0.21, 0.32]$ ). Conversely, posture  $d'$  was related to  $d'$  for happy PLDs ( $r=0.31, p = 0.02, 95\% \text{ CI } [0.09, 0.50]$ ) but not angry PLDs ( $r = 0.11, p = 0.45, 95\% \text{ CI } [-0.12, 0.32]$ ) or sad PLDs ( $r = 0.05, p = 0.71, 95\% \text{ CI } [-0.18, 0.28]$ ). The same patterns of significance were also found in correlation analyses which did not control for age group, and in partial correlations controlling both for age group and sensitivity in the affectively-neutral task thought to be less related (e.g., controlling for kinematic  $d'$  when examining the relationship between posture and happiness detection). These analyses thereby confirm that

OAs are indeed impaired in recognizing the affective state relying predominantly upon posture information in the present stimulus set – i.e., the cue they are impaired in perceiving.



**Fig. 3 - Scatter plots illustrating the relationship between sensitivity to sadness, anger and happiness (Experiment 3) and sensitivity to posture (Experiment 1) and kinematics (Experiment 2). Significant predictors are shown by solid lines, and non-significant predictors by broken lines.**

## Tables of descriptive and inferential statistics for Experiments 1-3

**Table 1: Mean (SD)  $d$ 's in each condition and group for Experiments 1-3**

	Group	
	Older adults	Younger adults
<b>Full samples</b>		
Exp 1: Large postural signal	0.70 (0.34)	1.01 (0.55)
Exp 1: Small postural signal	0.54 (0.31)	0.76 (0.41)
Exp 2: Large kinematic signal	1.56 (0.60)	1.56 (0.61)
Exp 2: Small kinematic signal	0.99 (0.36)	0.91 (0.40)
Exp 3: Angry PLDs	1.74 (0.69)	1.57 (0.61)
Exp 3: Sad PLDs	2.22 (0.71)	1.91 (0.58)
Exp 3: Happy PLDs	0.28 (0.64)	0.76 (0.77)
<b>Only including participants undertaking all three experiments</b>		
Exp 1: Large postural signal	0.66 (0.34)	1.03 (0.55)
Exp 1: Small postural signal	0.50 (0.30)	0.78 (0.41)
Exp 2: Large kinematic signal	1.53 (0.50)	1.64 (0.65)
Exp 2: Small kinematic signal	0.95 (0.31)	0.94 (0.42)
Exp 3: Angry PLDs	1.65 (0.75)	1.53 (0.61)
Exp 3: Sad PLDs	2.09 (0.78)	1.88 (0.56)
Exp 3: Happy PLDs	0.27 (0.55)	0.74 (0.78)

**Table 2. ANOVA results with full samples for Experiments 1-3**

Factor(s)	df	F-value	P	$\eta_p^2$
Exp 1: Signal size x age	1,55	1.86	0.18	0.03
Exp 1: Signal size	1,55	44.10	< 0.001	0.45
Exp 1: Age	1,55	6.30	0.01	0.10
Exp 2: Signal size x age	1,76	2.39	0.13	0.03
Exp 2: Signal size	1,76	274.27	< 0.001	0.78
Exp 2: Age	1,76	0.03	0.87	< 0.01
Exp 3: Affective state x age	2,162	9.62	0.001	0.11
Exp 3: Affective state	2,162	138.06	< 0.001	0.63
Exp 3: Age	2,162	< 0.01	> 0.99	< 0.01

**Table 3. ANOVAs results for Experiments 1-3 including only those participants taking part in all three experiments**

Factor(s)	df	F-value	P	$\eta_p^2$
Exp 1: Signal size x age	1,51	1.94	0.17	0.04
Exp 1: Signal size	1,51	36.50	< 0.001	0.42
Exp 1: Age	1,51	8.43	0.01	0.14
Exp 2: Signal size x age	1,51	1.68	0.20	0.03

Exp 2: Signal size	1,51	189.79	< 0.001	0.79
Exp 2: Age	1,51	0.15	0.70	< 0.01
Exp 3: Affective state x age	2,102	4.46	0.02	0.08
Exp 3: Affective state	2,102	76.31	< 0.001	0.60
Exp 3: Age	2,102	0.12	0.73	< 0.01

## References

Edey, R., Yon, D., Cook, J., Dumontheil, I., & Press, C. (2017). Our own action kinematics predict the perceived affective states of others. *Journal of Experimental Psychology: Human Perception and Performance*, *43*(7), 1263-1268.

Sherman, M.T., Seth, A.K., Barnett, A.B., & Kanai, R. (2015). Prior expectations facilitate metacognition for perceptual decision. *Consciousness and Cognition*, *35*, 53-65.

Swets, J.A., Tanner, W.P., & Birdsall, T.G. (1961). Decision processes in perception. *Psychological Review*, *68*(5), 301-340.

Terman, M., & Terman, J. S. (1972). Concurrent variation of response bias and sensitivity in an operant-psychophysical test. *Perception & Psychophysics*, *11*(6), 428-432.

Van Reekum, C. M., Schaefer, S. M., Lapate, R. C., Norris, C. J., Greischar, L. L., & Davidson, R. J. (2010). Aging is associated with positive responding to neutral information but reduced recovery from negative information. *Social Cognitive and Affective Neuroscience*, *6*(2), 177-185.

Wyart, V., Nobre, A. C., & Summerfield, C. (2012). Dissociable prior influences of signal probability and relevance on visual contrast sensitivity. *Proceedings of the National Academy of Sciences*, *109*(9), 3593-3598.